

Neighbourhood Plan

Issue 1 Spring 2018

Cleobury Mortimer

Town Plan Meeting



61 residents attended a meeting at the Parish Hall on January 17th to set the vision for Cleobury's future to 2036. The meeting was moderated by an experienced professional planner Andrea Pellegram. It was a lively affair with input from old and young.

2

Your opinion matters



Every household has a right to a say in what gets developed in Cleobury and where.

Look out for the Big Cleobury Survey. It's about where we put the next housing scheme, better transport options and sporting facilities. Do we need a new community hub? What's important for jobs? What parts of our environment need protecting?

How Many Community Groups?



What makes a community? Usually it's people who meet with a common interest and share experiences, passions, help others or play sport.

4



A Plan for Cleobury

If you value where you live and plan to stay here, then you should make sure you have your say in the Neighbourhood plan for Cleobury Mortimer's future.

A Neighbourhood Plan is a legal planning document that involves finding out what is important to residents and businesses and then coming up with what where and what type of housing, social, "affordable", for rent and other services we need to put in place too support it. Residents get to vote on it in a referendum and Shropshire Planning have to approve and abide by it too.

Everyone knows we are in the grips of a national housing shortage and so some building is inevitable. What we can add is the where and what type. Our allocation under the Local Plan is 200 houses over the period 2016-2036. We have 60 already given permission or being built which leaves us another 140 to go.

Clearly we need to have jobs for all these people and the facilities, roads and infrastructure to support this expansion. (This is much slower growth than recently. Cleobury grew by 23% 2001-2015 with 7.5% growth in households expected 2016-2036.)

**Cleobury
Mortimer**
Town Council



Continued on page 2



A Plan for Cleobury (Continued)

The team of volunteers leading the plan, have been meeting community groups and businesses and finding out what is important and have identified;

Housing; Transport; Jobs and Training, Health and Wellbeing; The Environment; and Infrastructure.

A Town Plan meeting identified a vision for Cleobury in 2036 (See opposite) as well as the town's strengths, weaknesses, opportunities and threats.

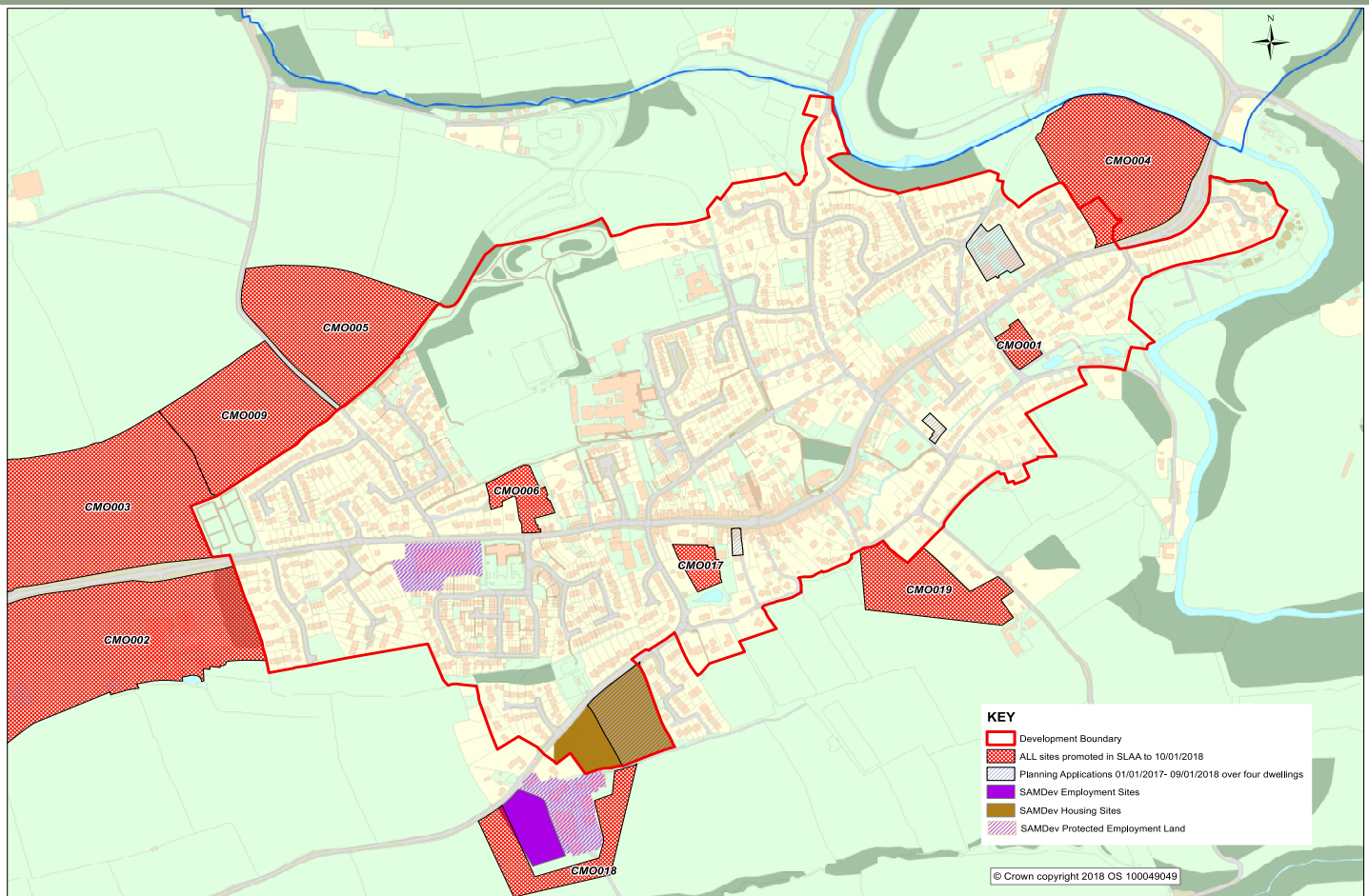
Next we will gather evidence on those needs via the Big Cleobury Survey as well as published data from government and our own specialist local data.

The next issue of this newsletter will cover the results and set out key elements of the plan we need to develop.

All this is leading towards a plan to be published in the autumn and a referendum next spring.



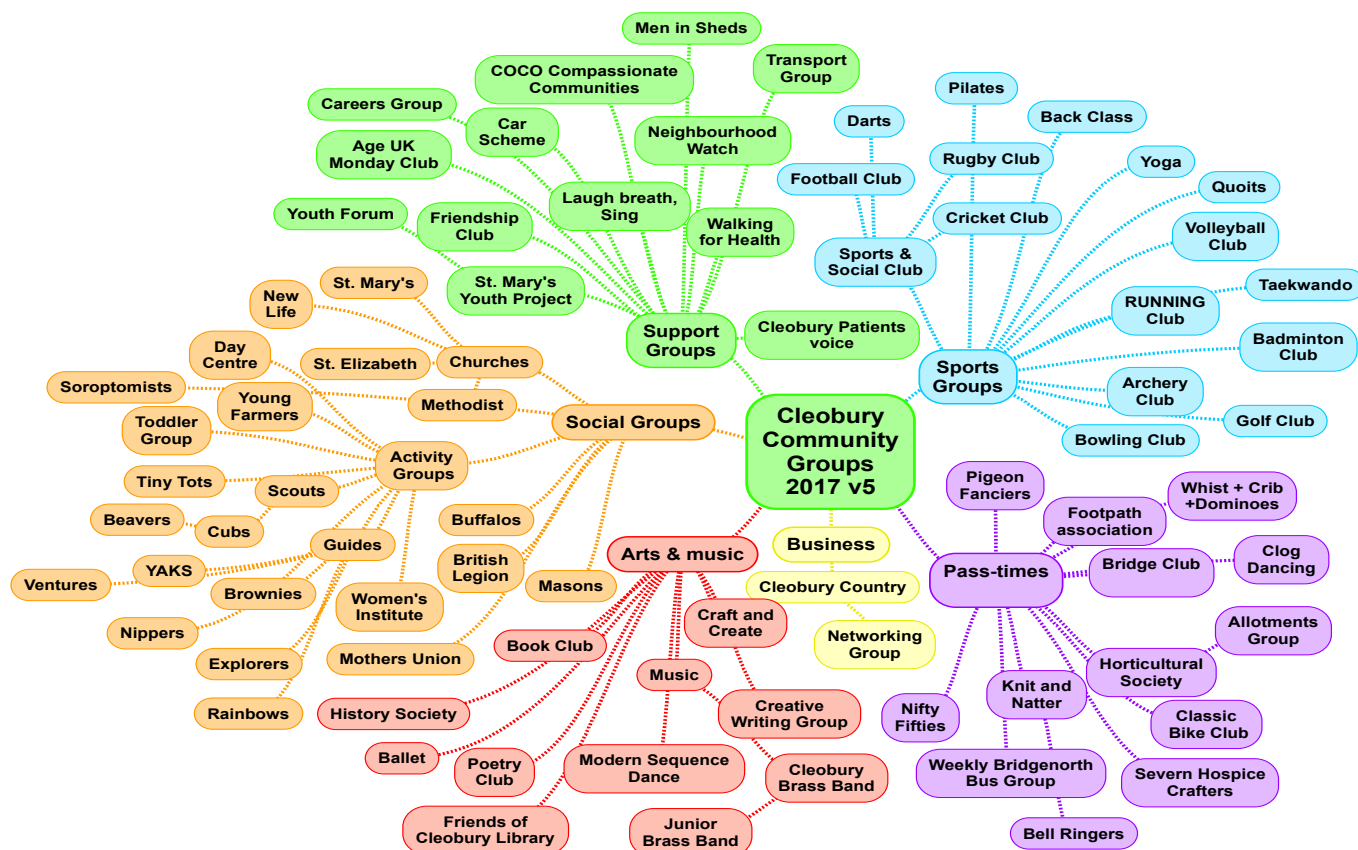
Below – The latest planning map showing potential development sites (hashed in red with numbers). Sites have been offered by land-owners and assessed. It does not mean they will be developed!



Vision of Cleobury 2036

- ❖ People of all ages live happily and enjoy a strong sense of community and the security that this brings;
- ❖ There is a state of the art community hub that meets the needs of all sectors of the community;
- ❖ The age profile of the community will be balanced because suitable housing will be available for people and families in all phases of their lives;
- ❖ There is a well-connected public transport system that allows people of all ages and mobility to travel on foot or by bus on safe, convenient and direct routes;
- ❖ Access to the beautiful countryside is available to all with good connections between rural and urban areas;
- ❖ There is a prosperous local economy that meets the needs of the town and surrounding villages and that provides well-paid local jobs, including working from home;
- ❖ The town centre is vibrant and meets the needs of local people so that they are not forced to travel long distances to access services;
- ❖ Mental and physical health is good for all members of the community because there are ample opportunities to exercise, meet others, and obtain specialist support when it is required;
- ❖ There is energy self-sufficiency and the opportunity to benefit from renewable sources of energy and cleaner energy including vehicle charging points;
- ❖ Green spaces are improved and enhanced, and local trees of importance are protected.
- ❖ Tourists will visit and contribute to the local economy.





How Many Community Groups?

When the Neighbourhood Plan team of volunteers set out to discover how many community groups we had in Cleobury, we were in for a surprise. So many - 79 in fact.

We plotted them because, firstly, they are one of the things that makes Cleobury special, the other reason was that we wanted to make sure we got to a cross section of the community to make sure we understood what people wanted.

A community that meets, plays sport, takes part in passtimes, explores the arts or faith together is a strong and cohesive community. One that is likely to be healthier and happier than one that doesn't. Something we want to nurture and encourage.

If you think we missed a voluntary or community group that is primarily based in Cleobury Mortimer, then e-mail us at survey@cleobury.org.uk For more information go to www.cleobury.org.uk (Neighbourhood Plan)

**Cleobury
Mortimer**
Town Council

